

2019 WISTA INTERNATIONAL AGM & CONFERENCE

OCTOBER 29, 2019 TO NOVEMBER 1, 2019

RIGHTSHIP

Safety
Sustainability
Resilience



1st November 2019, Grand Cayman

ABOUT RIGHTSHIP...

Profit for purpose!

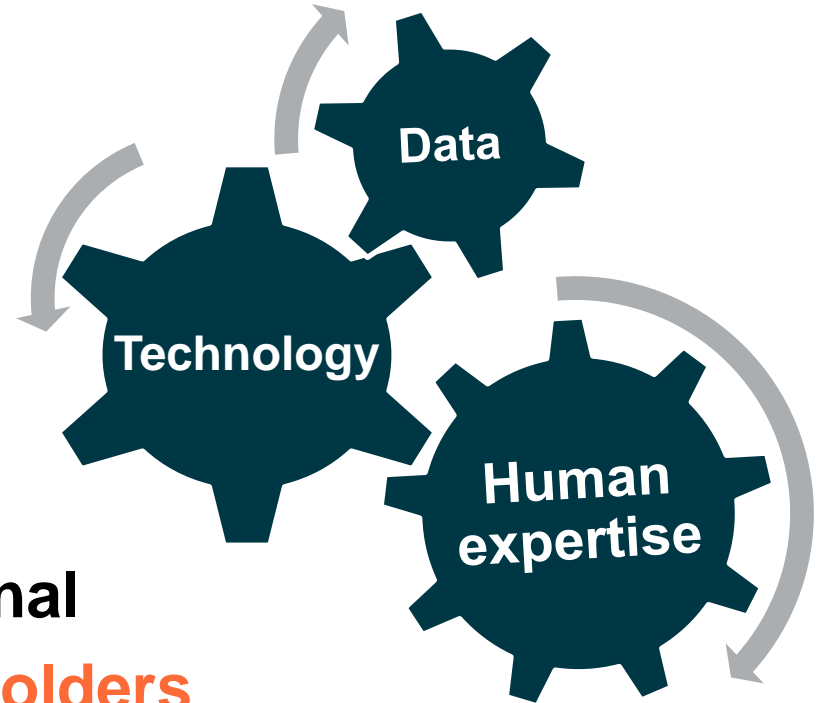
Working to improve the
safety and environmental
sustainability of the
world's maritime fleet.



Assurance process combines analytics with expertise

- Big data – global fleet
- Predictive Technology
- Subject Matter Experts

...moving from vetting to **assurance**, reducing **operational risk** for **Customers** & **Stakeholders**



Operational Risk - 2018



- ❖ **1,392** vessel casualties
 - ❖ **1,279** incidents (51 pollution based)
 - ❖ **2,442** detentions – 212,640 detained hrs
 - ❖ **> 2,000** global class withdrawal records
 - ❖ 1744 Vessels removed from Customer Supply chain
 - ❖ 188+ Fatalities
-
- More than 1 billion tonnes of CO₂ emitted
 - Sanctions / Piracy / Human Rights violations

How is 2019 faring?



Bulk carrier with 25 crew disappears off east Indonesia

Search and rescue operations are underway for the Indonesian-flagged bulk carrier 'Nur Allya', which has been missing along with its 25 crew members, after sending a distress signal in waters off eastern Indonesia on Sunday.

CASUALTIES | 26/08/19

Master of bulk carrier killed by snapped mooring line

Posted in [Accidents](#) by Mikhail Voytenko on Sep 11, 2019 at 12:52.

Master of bulk carrier [UNISON MEDAL](#) was reportedly, hit by broken mooring line and died on the spot, in the



11 missing, three rescued after offshore vessel Bourbon Rhode sinks



Eleven crew are missing and three have been rescued after a Bourbon anchor handler tug sank in the Atlantic in Hurricane Lorenzo.

Search and rescue operations for Bourbon Rhode, which started taking on water on Thursday, have found in a lifeboat. The company said it was confirmed the vessel which had a total of 14 crew on board had sunk.

STOLT tanker explosion, fire. Sep 30

Crew killed by lashing rope, NZ

April 3, 2019 at 04:26 by Mikhail Voytenko

A man, understood crew member, died after being hit by loose wire rope while lashing deck cargo of timber on board of bulk carrier CORESKY OL, docked at Gisborne, Northern Island NZ, on Apr 2 or in the morning Apr ... [continuu](#)

Lessons & incident prevention

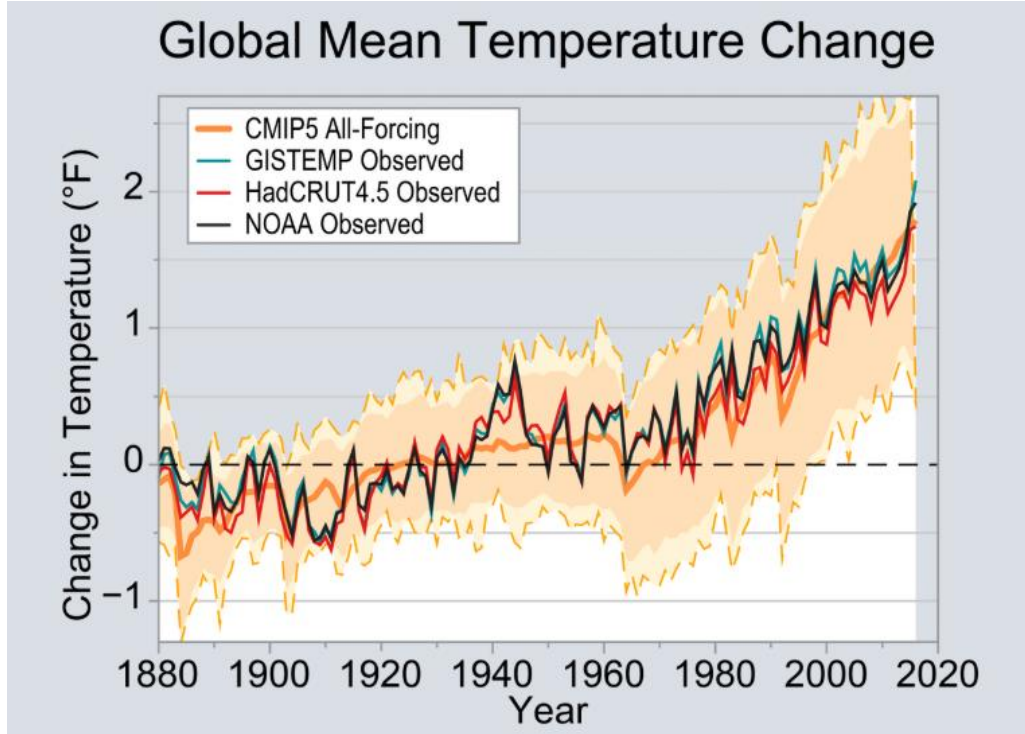
Particular areas of concern with vessel operations include:

- ❖ Planned Maintenance System (PMS) / Condition Based Monitoring (CBM)
- ❖ Fuel management (2020!)
- ❖ Mooring and tug operations
- ❖ Familiarisation with vessel systems and emergency procedures, including main engine, steering, ballast water treatment

Preventative actions

- Targeting on vessels where the root causes are not addressed
- Increased Physical validations & Transparency
- Resilient & robust Safety Management Systems

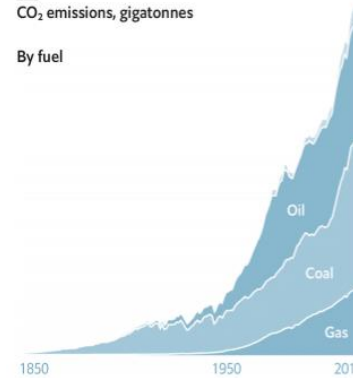
Climate Change – is it real?



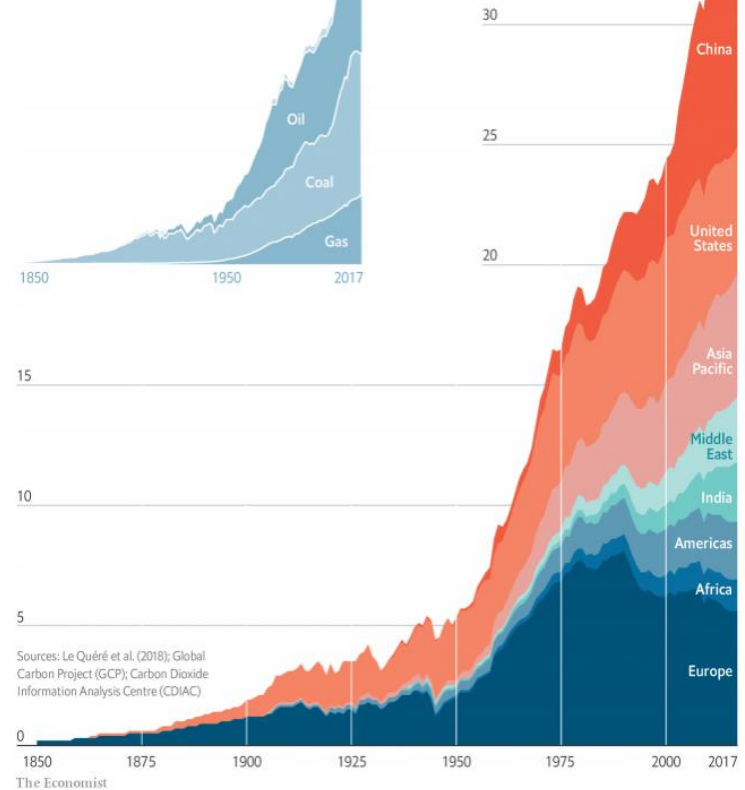
Climate Science Special Report

CO₂ emissions, gigatonnes

By fuel



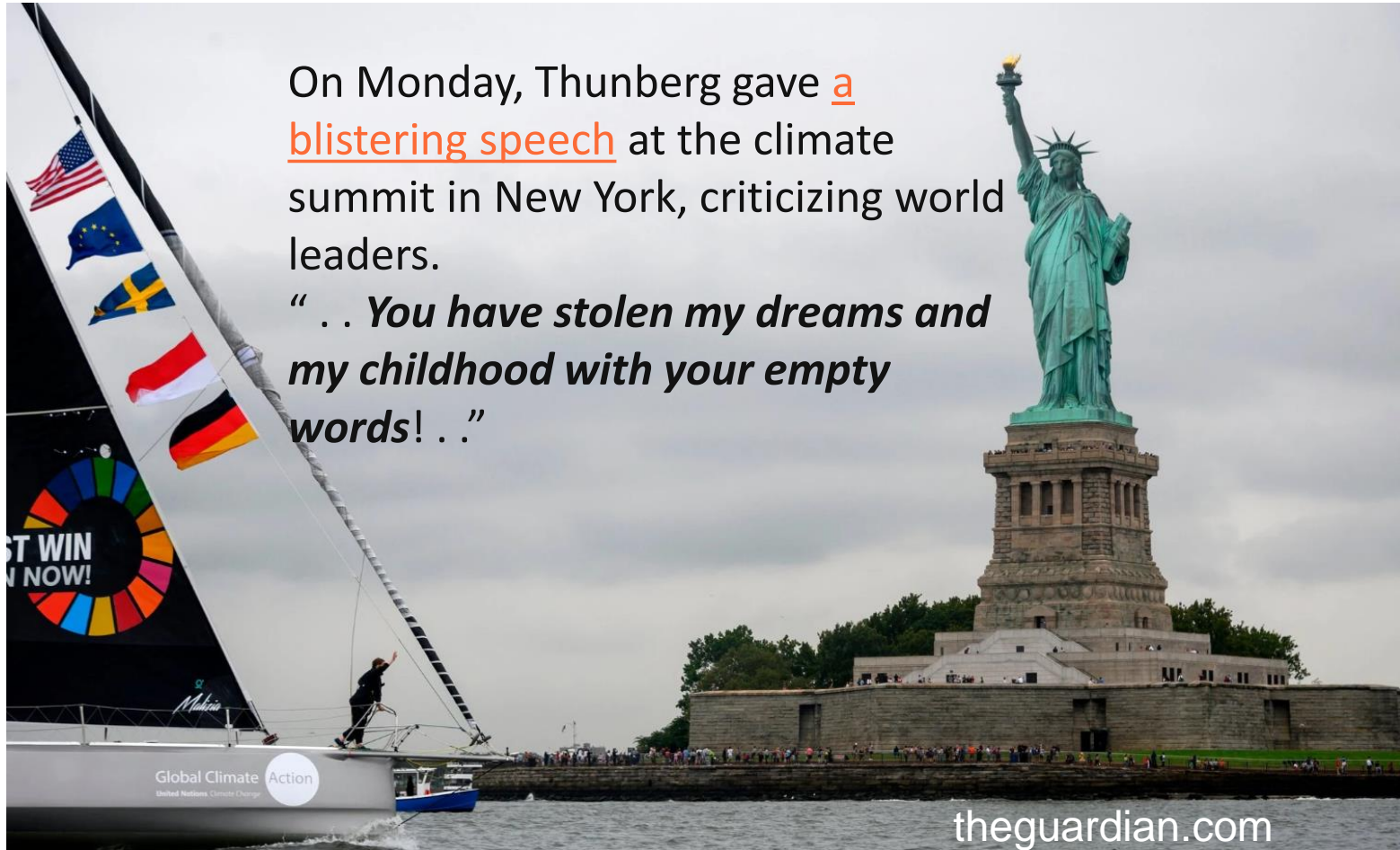
By country/region



Greta arrives in New York!

On Monday, Thunberg gave a blistering speech at the climate summit in New York, criticizing world leaders.

“ . . You have stolen my dreams and my childhood with your empty words! . . ”



11/26/2018

Rio Tinto warns climate inaction poses 'greatest long-term threat'

The Sydney Morning Herald

BUSINESS COMPANIES MINING

Rio Tinto warns climate inaction poses 'greatest long-term threat'

. . . Rio Tinto Chairman Simon Thompson said society – particularly **millennials** – were demanding higher standards for the companies they **worked** for and **invested their money** in.

He signaled a renewed emphasis from Rio Tinto's board on **environmental, social and governance** issues, and . . . transition to a "**low carbon economy**".



Rio Tinto chairman Simon Thompson. EDDIE JIM

"Perhaps the greatest long-term threat to Rio Tinto is if business, investors, consumers and especially governments, collectively fail to take action on climate change," he said.

Case Study – Cargill Ocean Transport

Corporate Responsibility Report

Cargill Ocean Transportation
2018



<https://www.cargill.com/doc/1432142299705/cargill-sustainable-shipping-2018.pdf>

“We exceeded our 2020 target that 80% of our fleet would be rated A through D by RightShip and we have already reached 82%.

*We have achieved a **12.1% decline** in CO₂ output per cargo-ton-mile across our time-chartered fleet since 2016”.*

Jan Dieleman
President
Cargill Ocean Transportation

OPERATING BEYOND COMPLIANCE

What are the expectations?

E S G

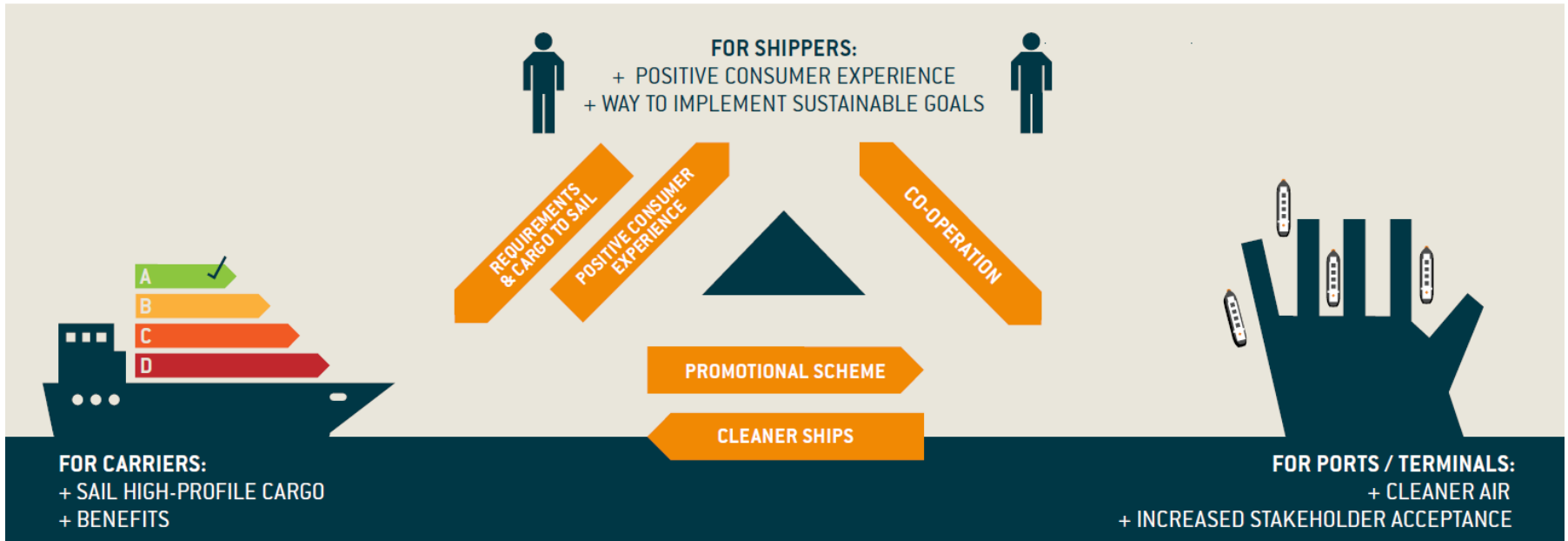
- Safety & Security?
- Environmental Sustainability?
- Transparency & Accountability?
- Collaborative Partnerships?
- Efficiency & Innovation?
- Human Rights, Abandonment & Wellness?
- Stakeholder Welfare?

Gender Equality

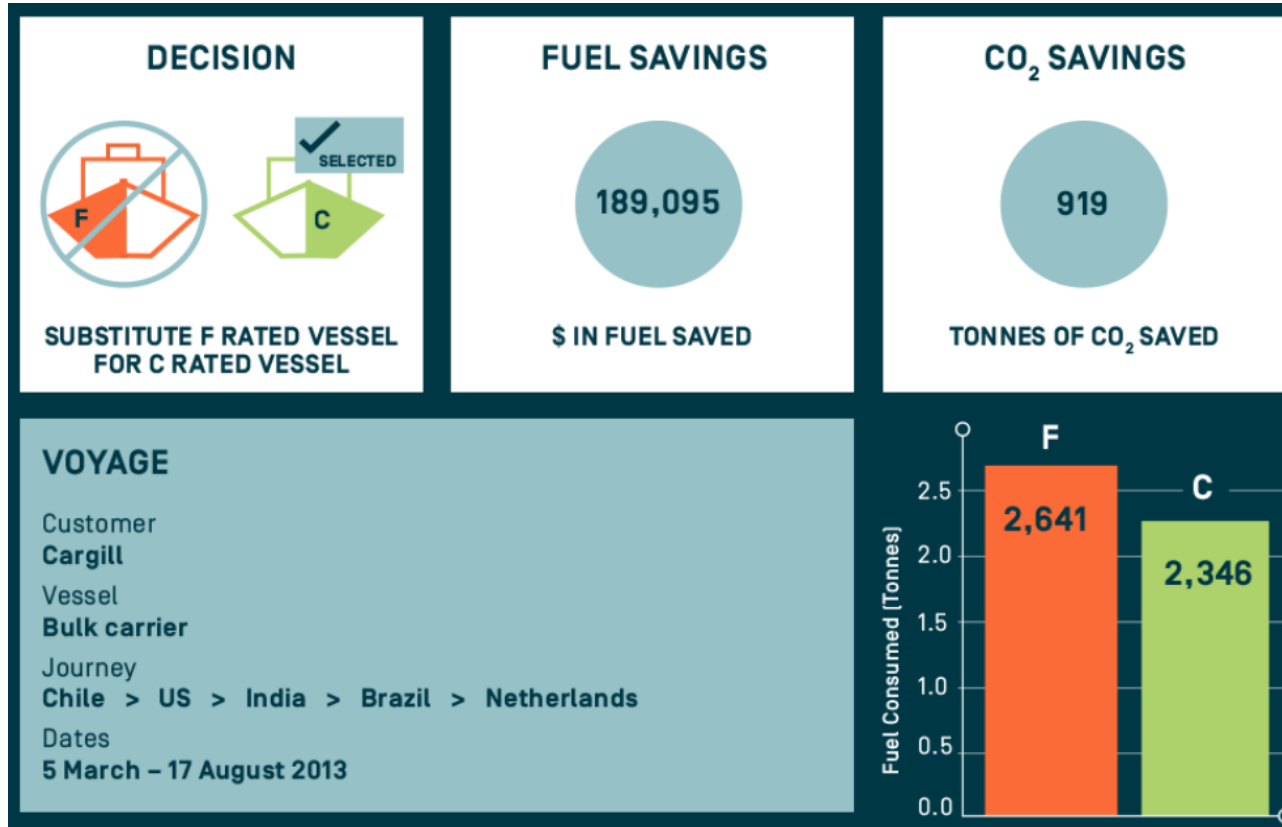
Social License to operate!



Reducing Shipping's GHG Emissions Requires a Collaborative Approach



Case study – Tyndall research



Supply Chain Analysis – Carbon Accounting

Vessel Specifications

IMO:	9604988
Name:	PACIFIC TREASURE
GHG Emissions Rating:	D
DWT:	181458
Total Cargo Capacity (t):	181458
Cargo Loaded (t):	179,003.00
Voyage Load Factor:	98.65%
Voyage Fuel Type:	HFO
EEDI/EVDI*:	2.3528
Fuel Conversion Factor:	3.1144

GHG Emissions - Part Cargo

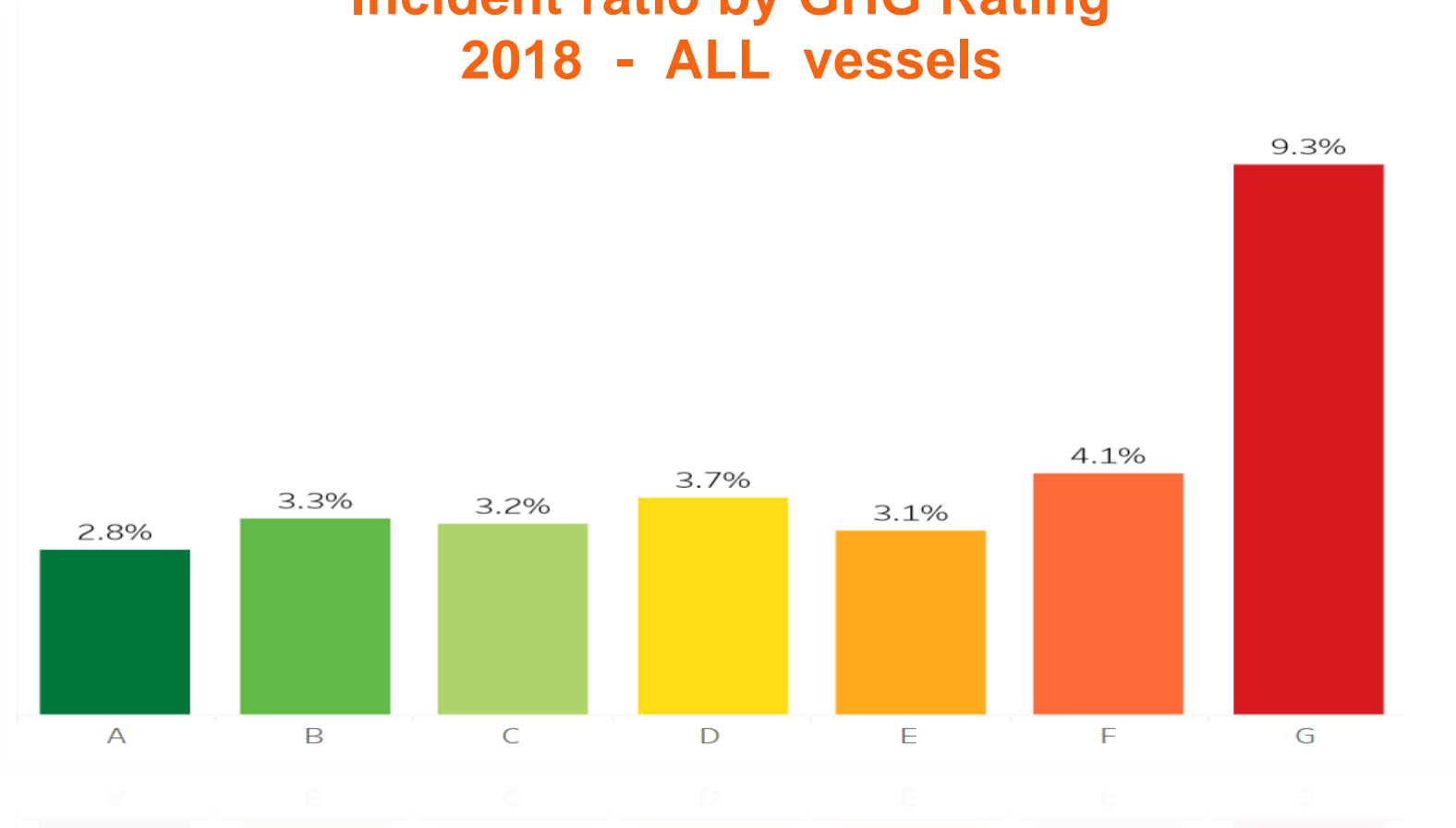
	CO ₂ e (kg)	CO ₂ e (t)	
Well to Tank (WTT):	159,173.35	159.17	Fuel Production
Tank to Wheels (TTW):	1,928,446.38	1,928.45	Voyage
Well to Wheels (WTW):	2,087,619.73	2,087.62	Full Lifecycle

SCOPE 3 Emissions

2,088

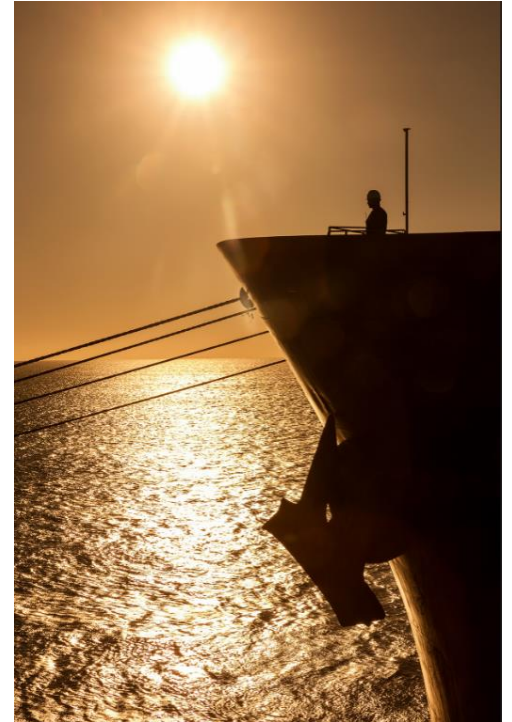


Incident ratio by GHG Rating 2018 - ALL vessels



Human Rights

- **MLC amendments 2017**
- **UK Modern Slavery Act 2015**
 - Contains “transparency in supply chains”
 - Offenders arrested can face up to life imprisonment



Abandonment



- ILO & IMO database
- Include details of companies who have a history of abandonment
- Identifies by vessel, DOC company, Ship / Technical Manager
- Includes **150 vessels** in last 5 years
- ~**300 companies** on high risk list
- ***Excluded*** from Supply chains

Health & Wellness Assessment

RightShip.com/safety/inspections



- Recognises influence that **living & working standards** have on seafarer wellbeing, work performance, safety & employee retention
- Provides **recognition** for ship owners & managers who go **beyond MLC compliance**

Support Seafarers Welfare Organizations

. . . time & money!

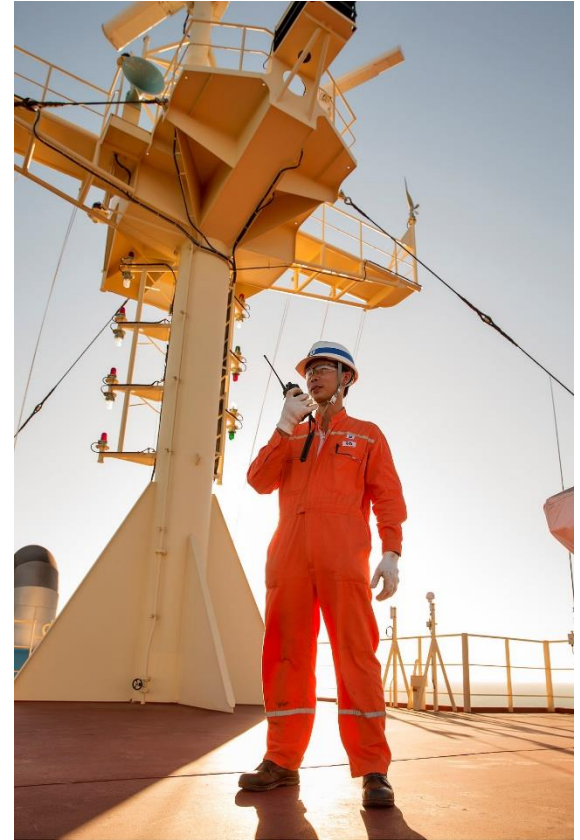
Houston, Galveston, Corpus Christi (post Harvey),
Port Arthur & Fort Lauderdale Seafarers Centres



Rewarding Safe, Sustainable, Resilient Vessels . . .



- Secure the Maritime Supply Chain, be *Profitable!*
- Accelerate industry sustainability - *working together*
- Opportunity to *reward & incentivize* energy efficiency
- Safety, Environmental Stewardship, Transparency & Resilience



Personally!...



STEERING CHANGE

RIGHTSHIP

rightship.com

anuj.chopra@rightship.com

 [@RightShip_](https://twitter.com/RightShip_)

 [RightShip](https://www.linkedin.com/company/RightShip)

